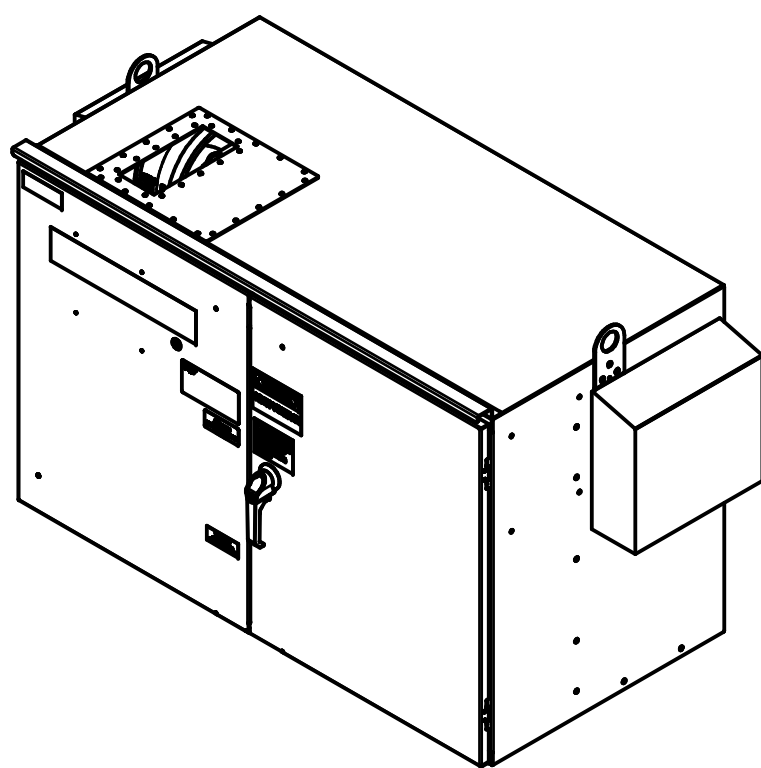
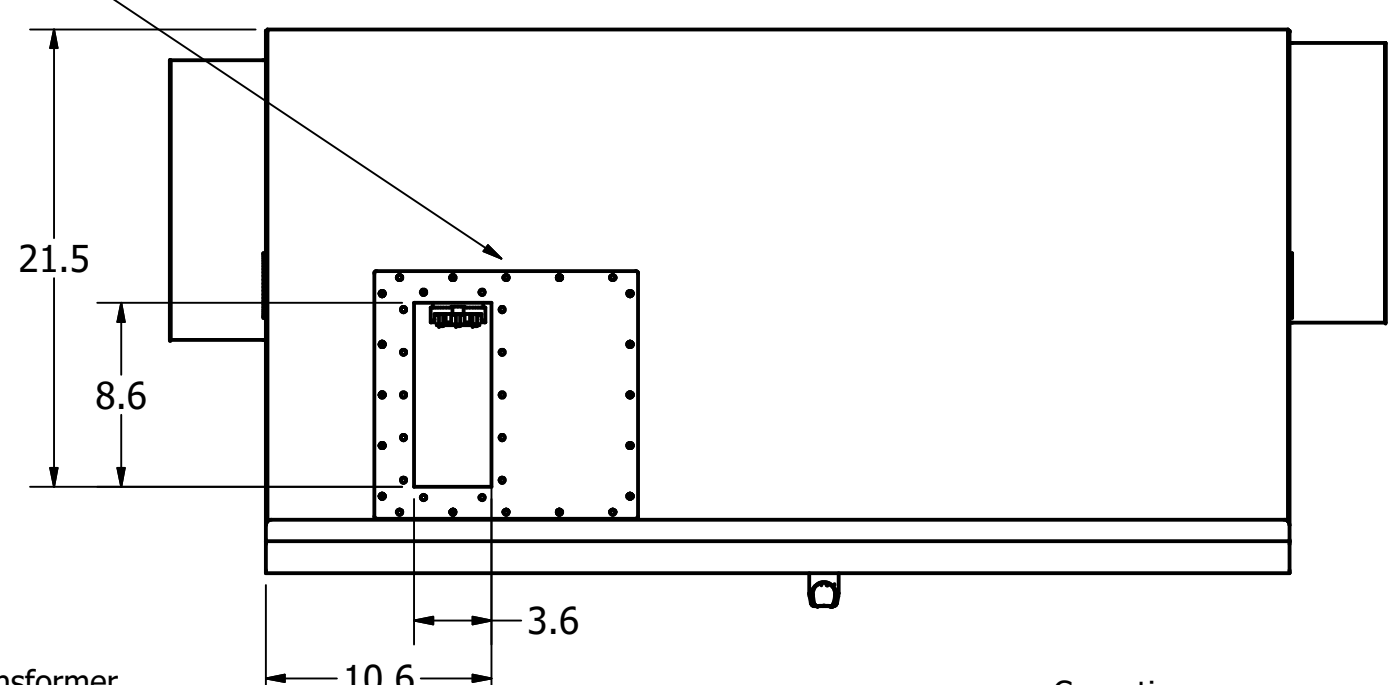


UNIT SPECIFICATIONS						
kW	VOLT	PHASE	HZ	HARMONIC	KVAR	AMPS
250	380-415	3	50	5TH	102	470

SCHEMATIC : 31582 Top View

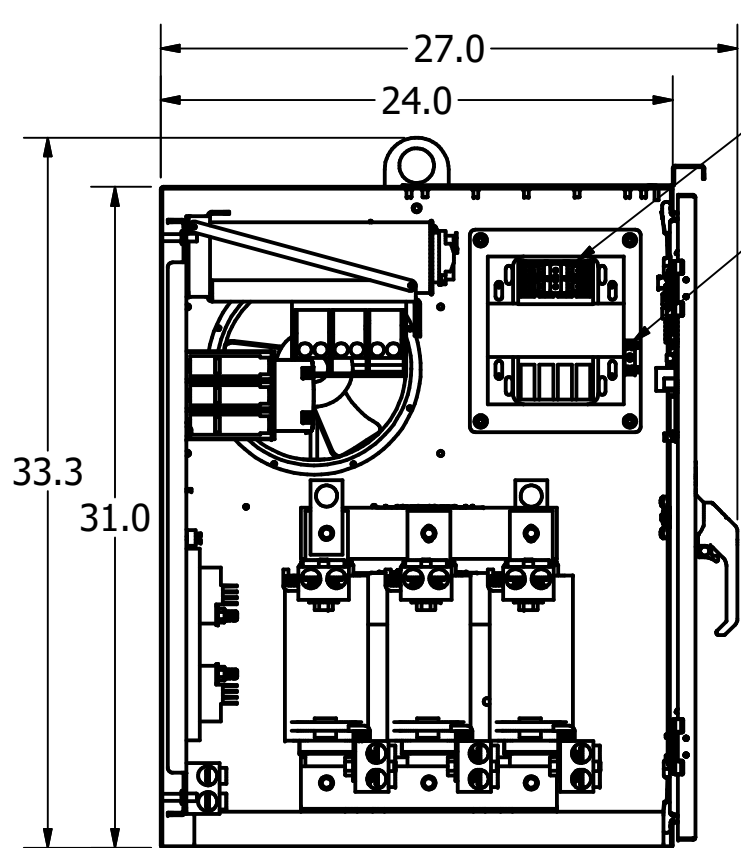


GROUND LUG:
WIRE RANGE - TWO 600MCM-2
TIGHTENING TORQUE 500 IN-LB.

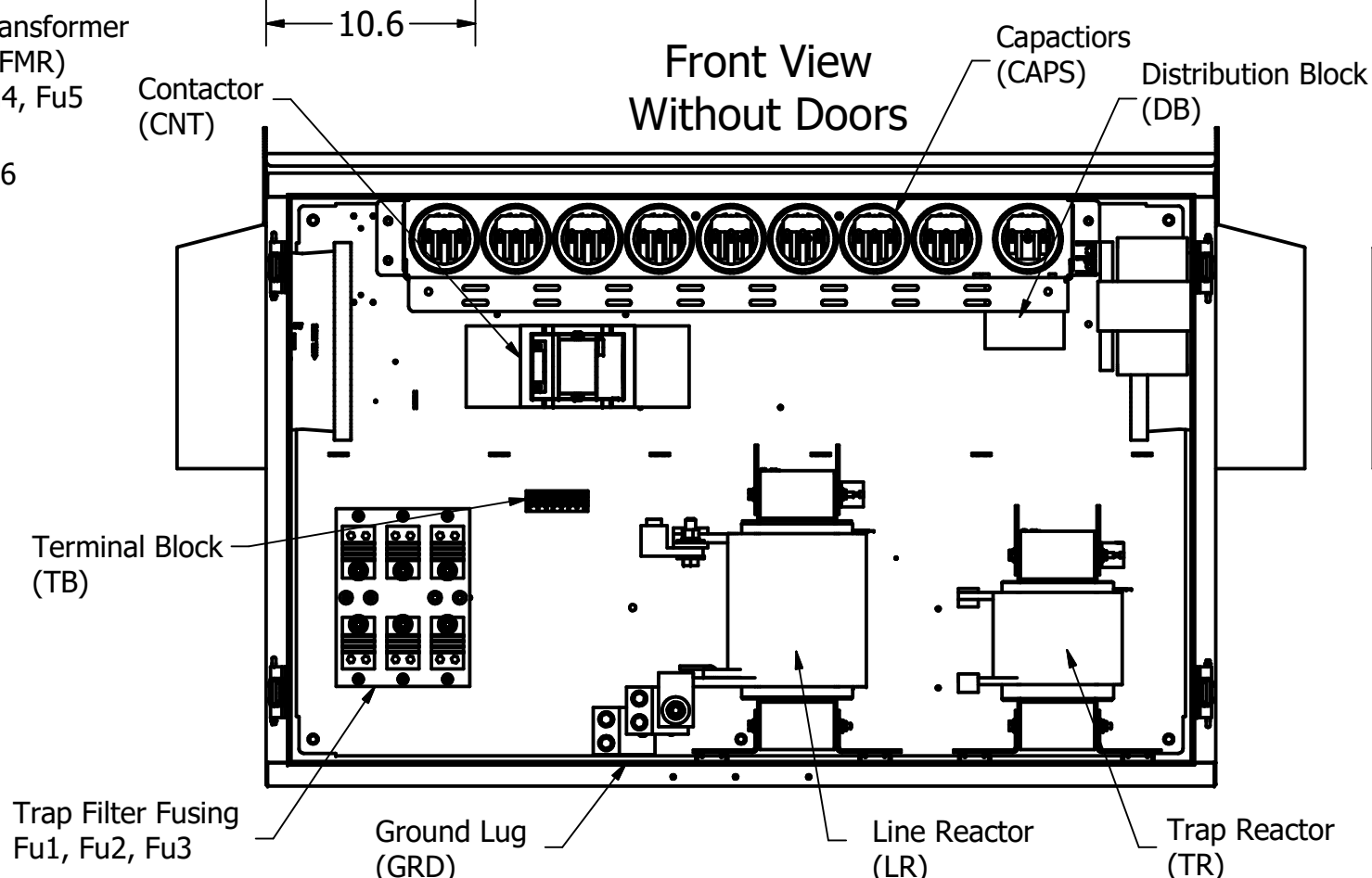
CUSTOMER CONNECTIONS:
WIRE RANGE - TWO 600MCM-2
TIGHTENING TORQUE 500 IN-LB.

L1 L2 L3 T1 T2 T3

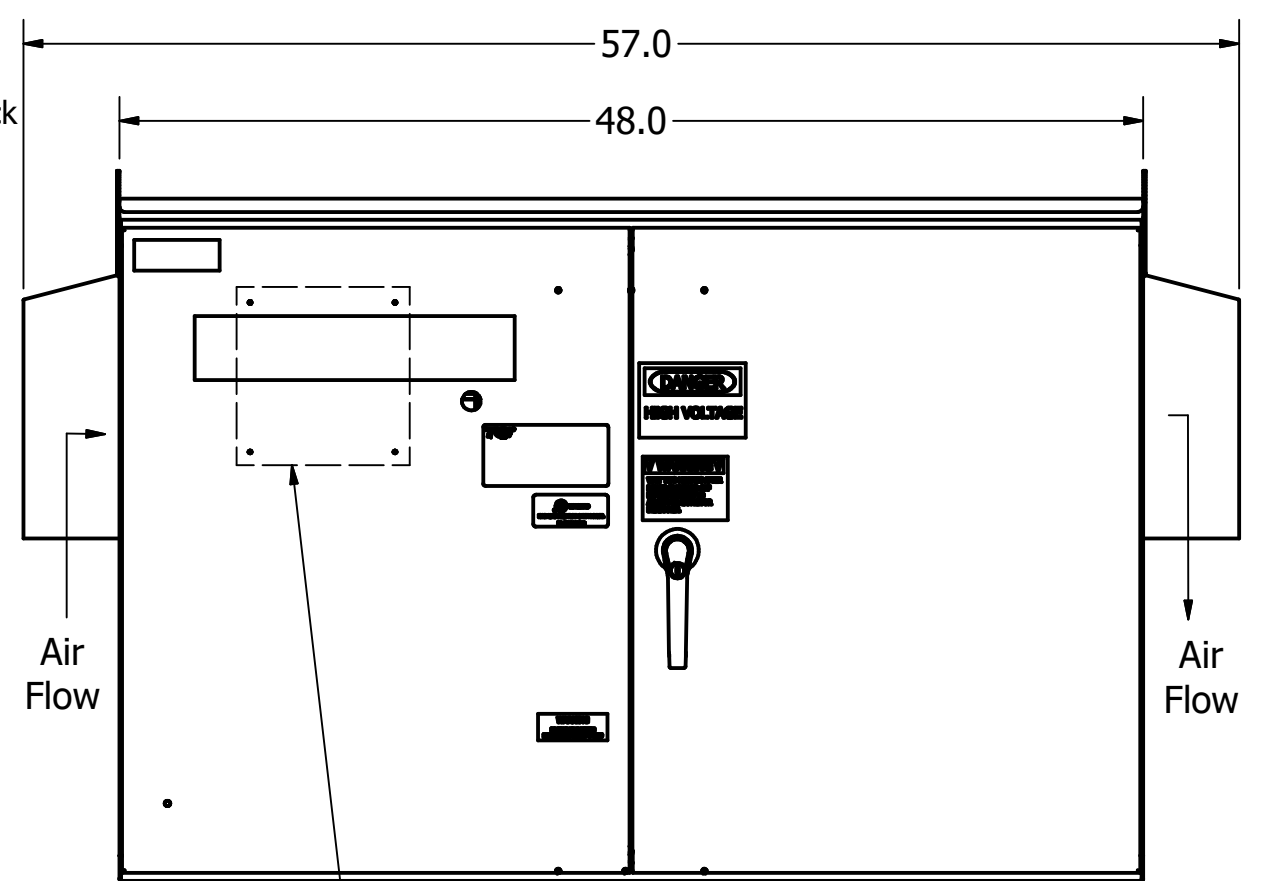
- Notes:**
1. Customer is responsible for installation to meet all national and local electrical codes.
 2. Use only hubs or fittings that comply with UL514B for type 3R enclosures.
 3. Approx. WT LBS : 850
 4. Enclosure Color: RAL 7006 Beige Grey.
 5. Filter Configured With Dry Capacitors.



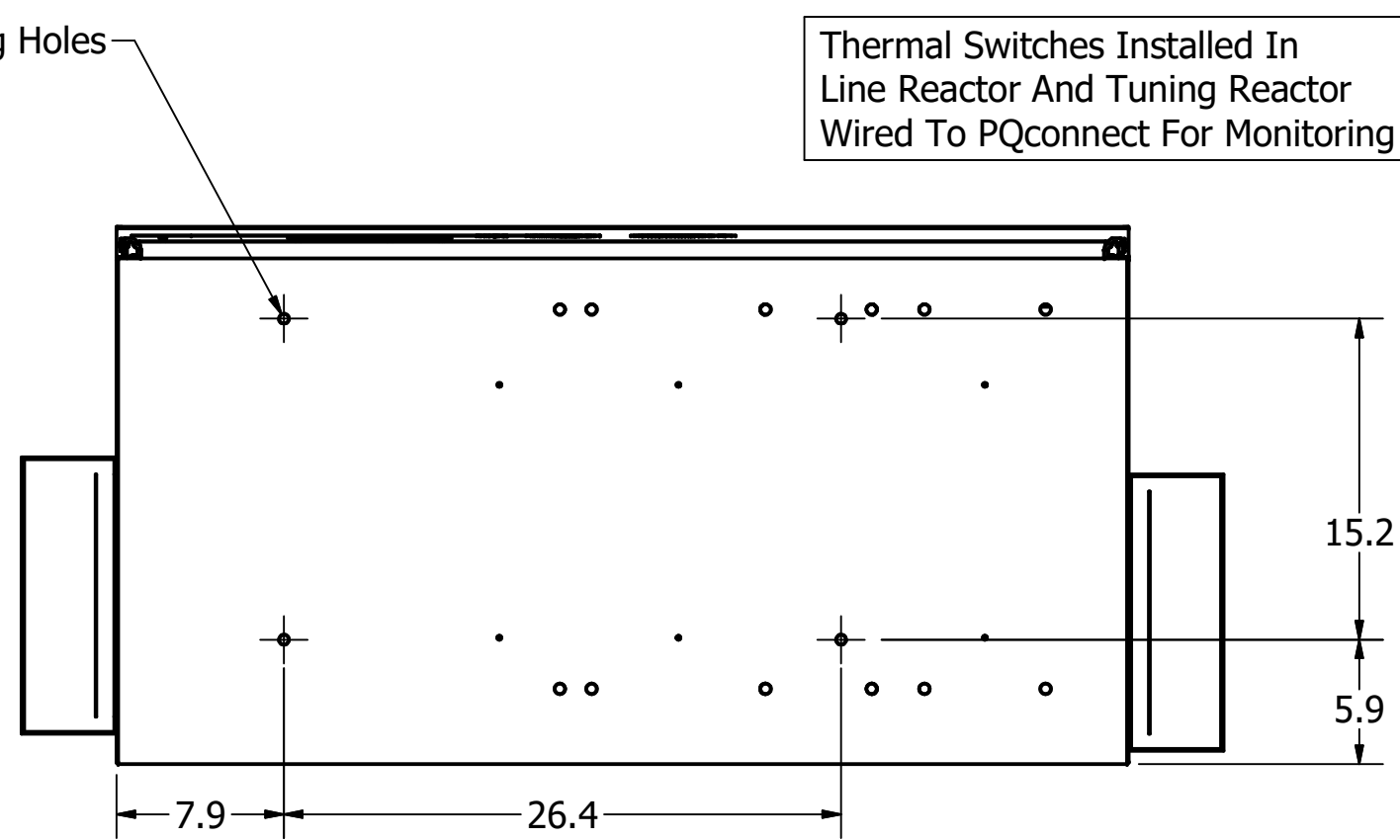
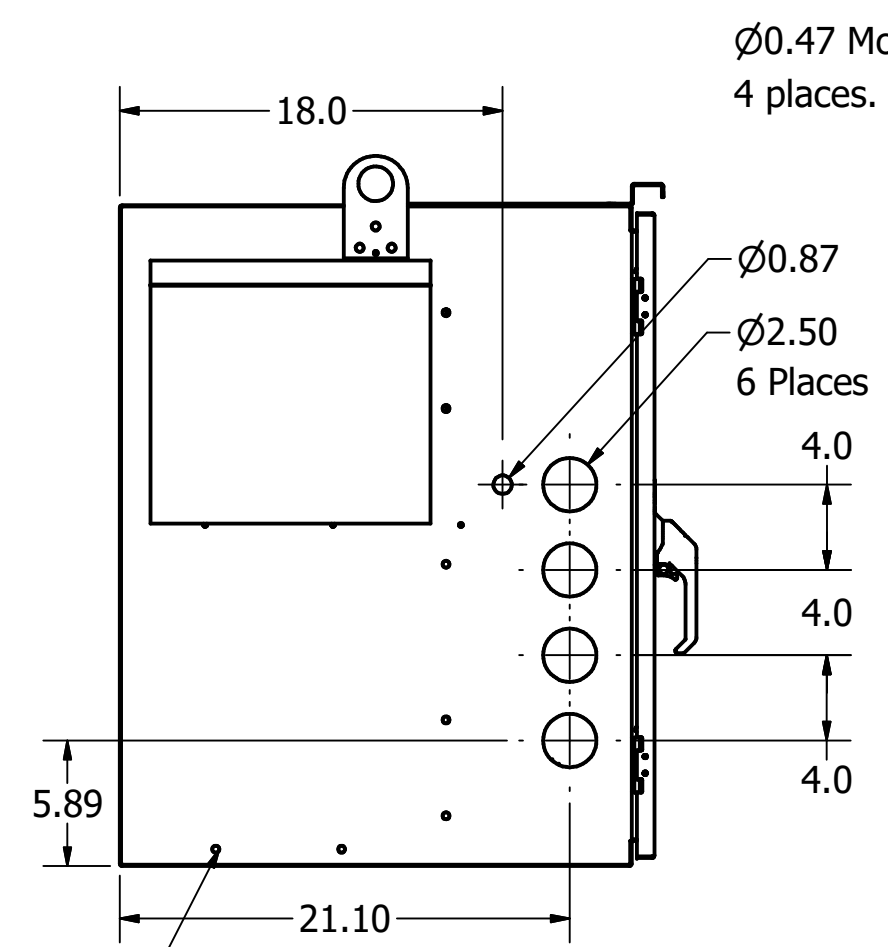
Side View Without Wall



Front View Without Doors



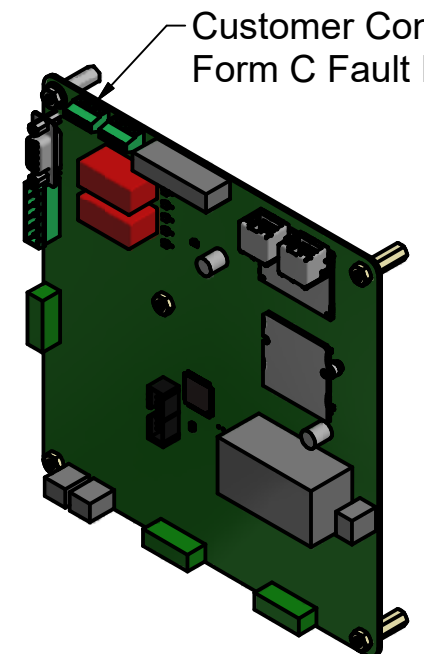
Front View




Bottom View

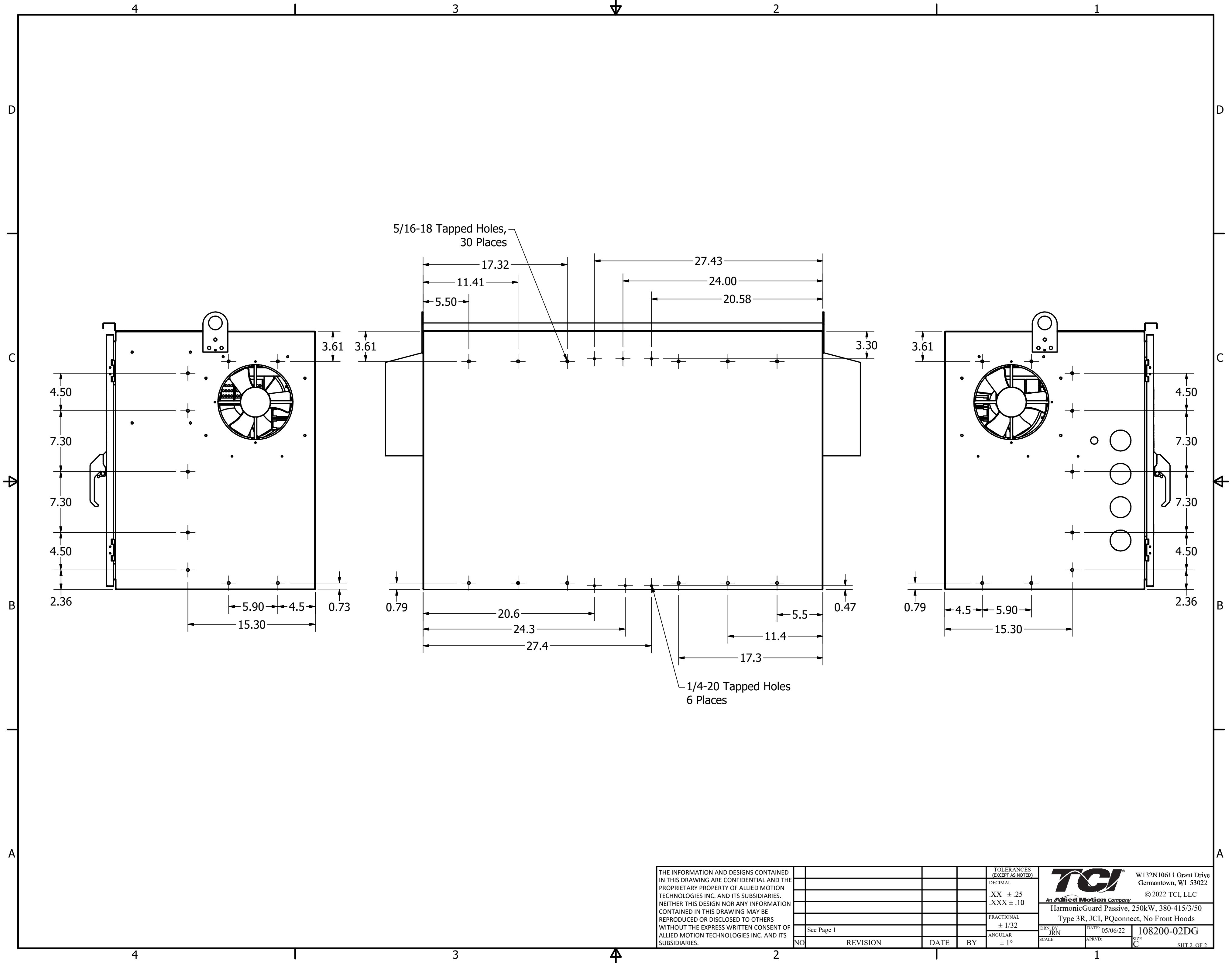
PQconnect Contactor Control Board Mounted To Inside Of Door

Customer Connection Form C Fault Relay J10



5/16-18 Tapped Holes, 30 Places See Page 2


THE INFORMATION AND DESIGNS CONTAINED IN THIS DRAWING ARE CONFIDENTIAL AND THE PROPRIETARY PROPERTY OF ALLIED MOTION TECHNOLOGIES INC. AND ITS SUBSIDIARIES. NEITHER THIS DESIGN NOR ANY INFORMATION CONTAINED IN THIS DRAWING MAY BE REPRODUCED OR DISCLOSED TO OTHERS WITHOUT THE EXPRESS WRITTEN CONSENT OF ALLIED MOTION TECHNOLOGIES INC. AND ITS SUBSIDIARIES.				TOLERANCES (EXCEPT AS NOTED) DECIMAL .XX ± .25 .XXX ± .10		 TCI An Allied Motion Company W132N10611 Grant Drive Germantown, WI 53022 © 2022 TCI, LLC	
B	6114 Updated Holes/Positions	01/05/23	JRN	FRACTIONAL ± 1/32	HarmonicGuard Passive, 250kW, 380-415/3/50 Type 3R, JCI, PQconnect, No Front Hoods		
A	As Designed	05/06/22	JRN	ANGULAR ± 1°	DRN BY JRN	DATE 05/06/22	108200-02DG
NO	REVISION	DATE	BY	SCALE 1/9	APRVD:	SIZE C	SHT.1 OF 2



THE INFORMATION AND DESIGNS CONTAINED IN THIS DRAWING ARE CONFIDENTIAL AND THE PROPRIETARY PROPERTY OF ALLIED MOTION TECHNOLOGIES INC. AND ITS SUBSIDIARIES. NEITHER THIS DESIGN NOR ANY INFORMATION CONTAINED IN THIS DRAWING MAY BE REPRODUCED OR DISCLOSED TO OTHERS WITHOUT THE EXPRESS WRITTEN CONSENT OF ALLIED MOTION TECHNOLOGIES INC. AND ITS SUBSIDIARIES.

NO	REVISION	DATE	BY

TOLERANCES (EXCEPT AS NOTED)
DECIMAL
.XX ± .25
.XXX ± .10
FRACTIONAL
± 1/32
ANGULAR
± 1°

 TCI An Allied Motion Company	W132N10611 Grant Drive Germantown, WI 53022 © 2022 TCI, LLC
	HarmonicGuard Passive, 250kW, 380-415/3/50 Type 3R, JCI, PQconnect, No Front Hoods
DRN BY: JRN SCALE:	DATE: 05/06/22 APRVD:
108200-02DG SIZE: C	SHT 2 OF 2

See Page 1